



**Democratic Support**

Plymouth City Council  
Ballard House  
West Hoe Road  
Plymouth  
PL1 3BJ

Please ask for Helen Rickman  
T 01752 398444  
E [helen.rickman@plymouth.gov.uk](mailto:helen.rickman@plymouth.gov.uk)  
[www.plymouth.gov.uk/democracy](http://www.plymouth.gov.uk/democracy)  
Published 29 September 2015

#workingplymouth

## **WORKING PLYMOUTH**

### **TO FOLLOW**

Wednesday 30 September 2015  
4.30 pm  
Council House, Plymouth

**Members:**

Councillor Ricketts, Chair

Councillor Murphy, Vice Chair

Councillors Ball, Deacon, Fletcher, Hendy, Jarvis, Martin Leaves, Morris, Storer and Wheeler.

Members are invited to attend the above meeting to consider the items of business overleaf.

**Please find enclosed additional information for your consideration under agenda item number 4.**

**Tracey Lee**

Chief Executive

# **WORKING PLYMOUTH**

## **AGENDA**

### **PART I – PUBLIC MEETING**

#### **4. THE HISTORY CENTRE**

**(Pages 1 - 32)**

Members will be provided with a presentation on the History Centre detailing plans of the Exhibition Centre.

# **PLYMOUTH** **HISTORY CENTRE**

**LOVE OUR PAST**  
**STEP INTO**  
**THE FUTURE**

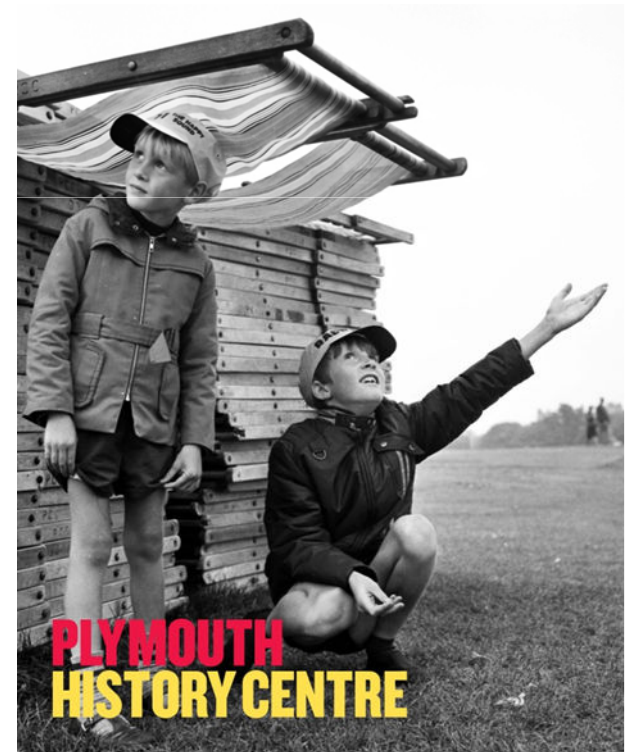
# PARTNERSHIP PROJECT

**LOVE OUR PAST  
STEP INTO  
THE FUTURE**

## Principal Partners

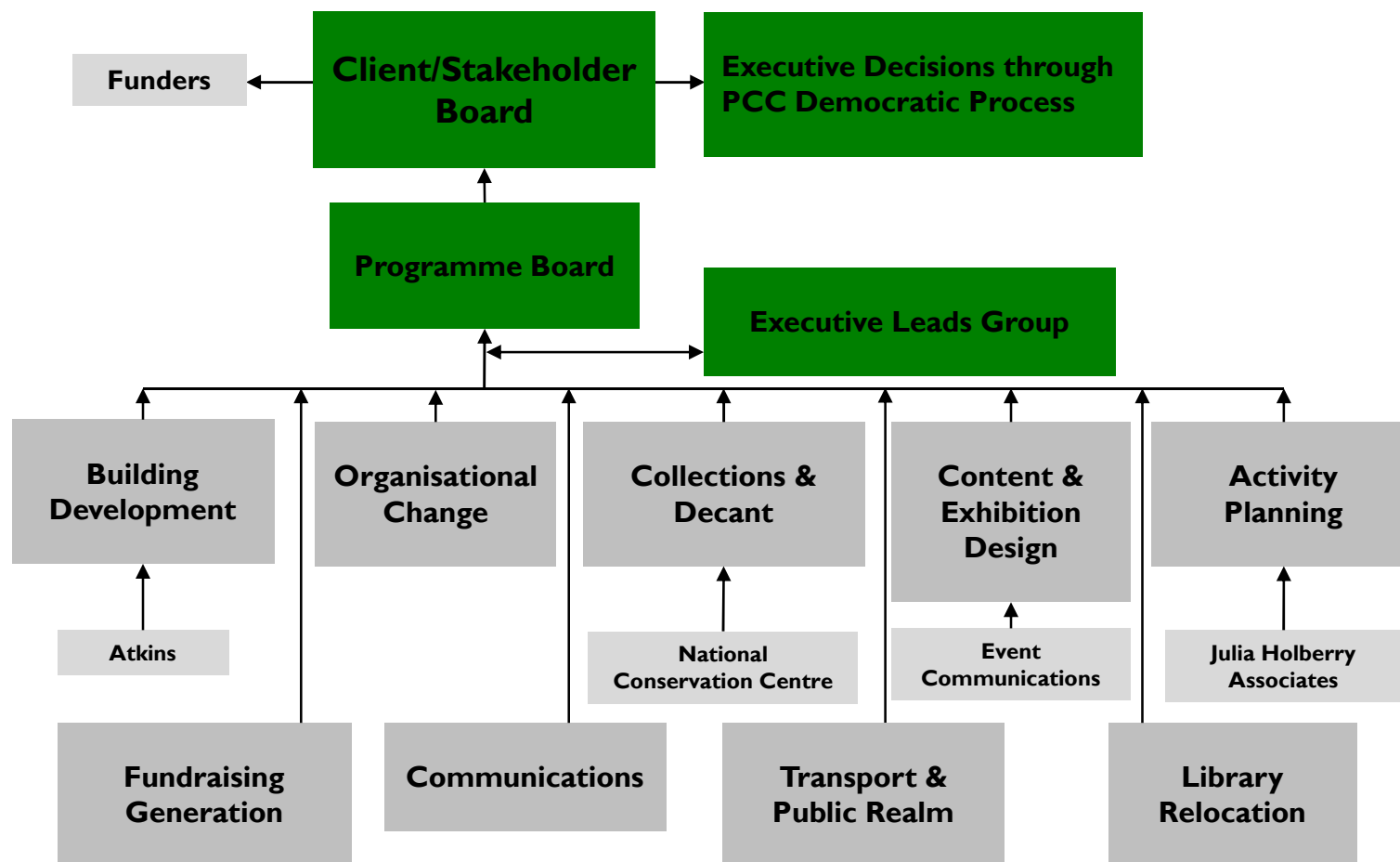
- South West Film & Television Archive
- South West Image Bank
- Plymouth University
- Plymouth City Council, Arts and Heritage

The Stakeholders Partnership Board also includes representation from the MoD, BBC, Destination Plymouth, Plymouth College of Art and Plymouth Culture Board



# TEAM STRUCTURE

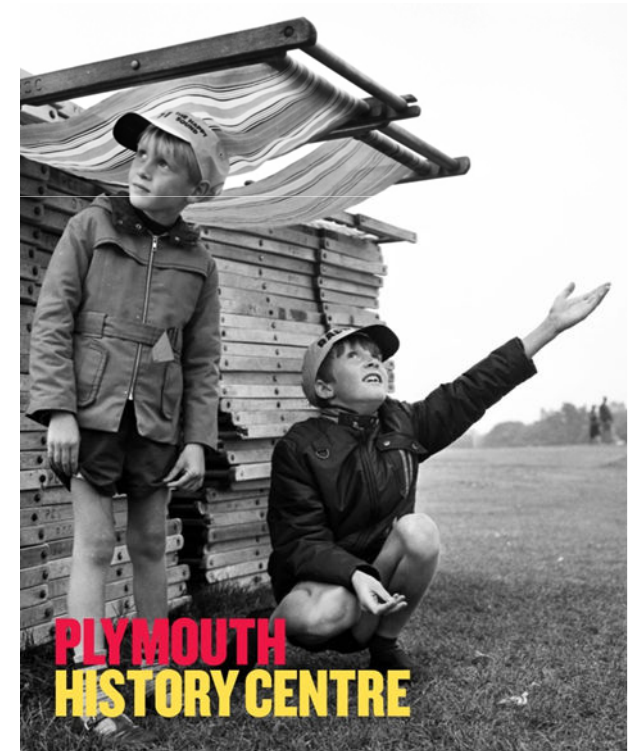
**LOVE OUR PAST  
STEP INTO  
THE FUTURE**



# THE TEAM

**LOVE OUR PAST  
STEP INTO  
THE FUTURE**

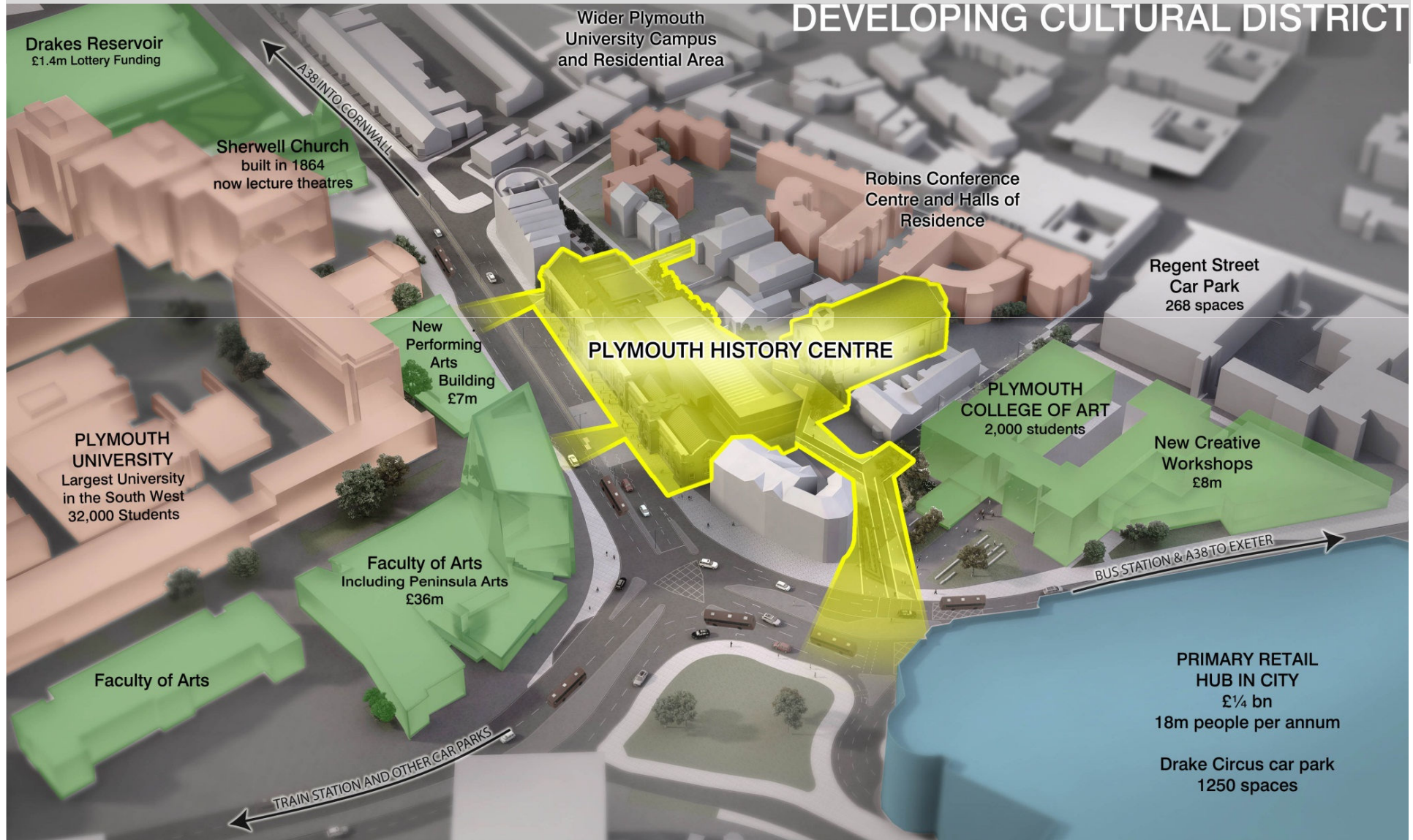
- Programme Director- Paul Brookes
- Client Lead – Nicola Moyle
- Programme Manager- Gareth Simmons
- Workstream leads:
  - Content/ Staff Development - Nicola Moyle
  - Conservation/ Activity Plan – Hilary Bracegirdle
  - Governance – Gareth Simmons
  - Decant - Louisa Blight
  - Buildings - Karen Brimicombe
  - Libraries - Chris Coldwell
  - Transport – Sally Farley
  - Communications – (vacant)
- Exhibition Design – Event Communications
- Building Design- Atkins
- Conservation - Chris Woods
- Activity Planning- Julia Holberry



# LOCATION

**LOVE OUR PAST  
STEP INTO  
THE FUTURE**

## DEVELOPING CULTURAL DISTRICT



# WHY A HISTORY CENTRE?

**LOVE OUR PAST**  
**STEP INTO**  
**THE FUTURE**



# LOCATION

**LOVE OUR PAST**  
**STEP INTO**  
**THE FUTURE**



# LOCATION

**LOVE OUR PAST**  
**STEP INTO**  
**THE FUTURE**



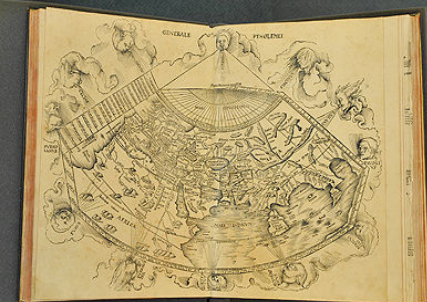
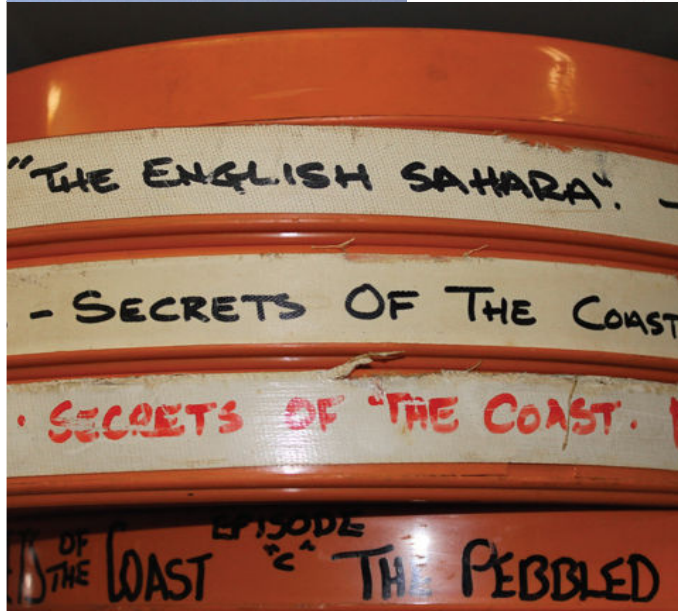
# ARCHIVES, MUSEUM, ART GALLERY, LIBRARY, EDUCATION

**LOVE OUR PAST  
STEP INTO  
THE FUTURE**



# THE COLLECTIONS

**LOVE OUR PAST**  
**STEP INTO**  
**THE FUTURE**



## THE COLLECTIONS

**LOVE OUR PAST**  
**STEP INTO**  
**THE FUTURE**

“This unique combination of buildings, objects, books, images, film, art and archival material provides a once in a lifetime opportunity to shine a light on Plymouth and its incredible places, people and stories; to create a new experience deeply rooted in Plymouth’s cultural fabric; and to inspire visitors to look at Plymouth in new ways”.

# NEW VISITOR ATTRACTION

**LOVE OUR PAST**  
**STEP INTO**  
**THE FUTURE**



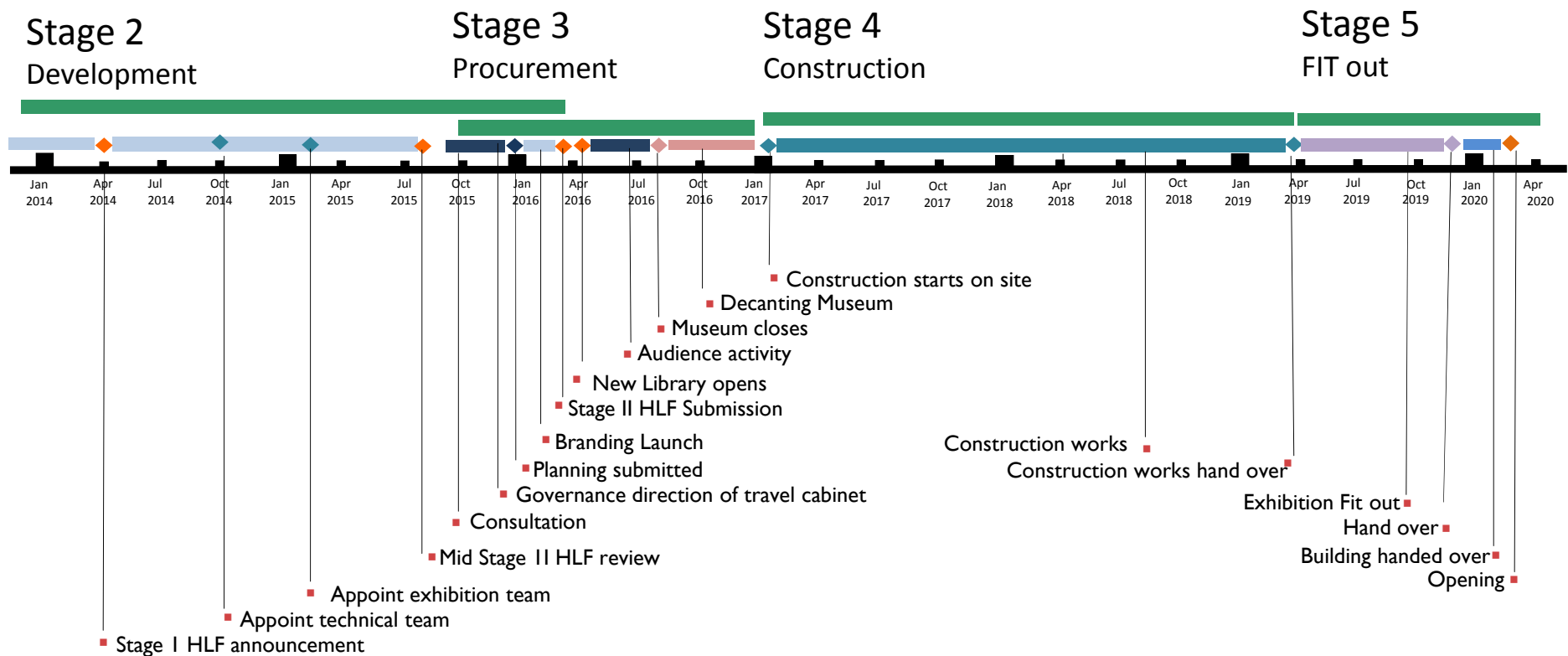
2020 – MAYFLOWER 400

**LOVE OUR PAST**  
**STEP INTO**  
**THE FUTURE**



# STAGE 2: THE PROGRAMME

**LOVE OUR PAST  
STEP INTO  
THE FUTURE**



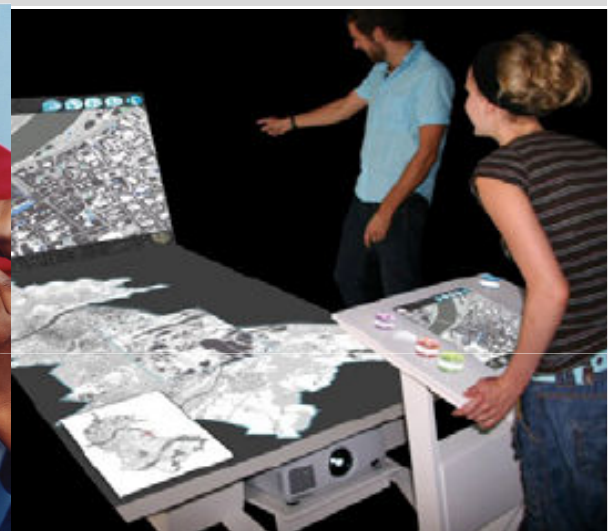
## VISITORS AND PARTICIPANTS

**LOVE OUR PAST**  
**STEP INTO**  
**THE FUTURE**



# VISITORS AND PARTICIPANTS

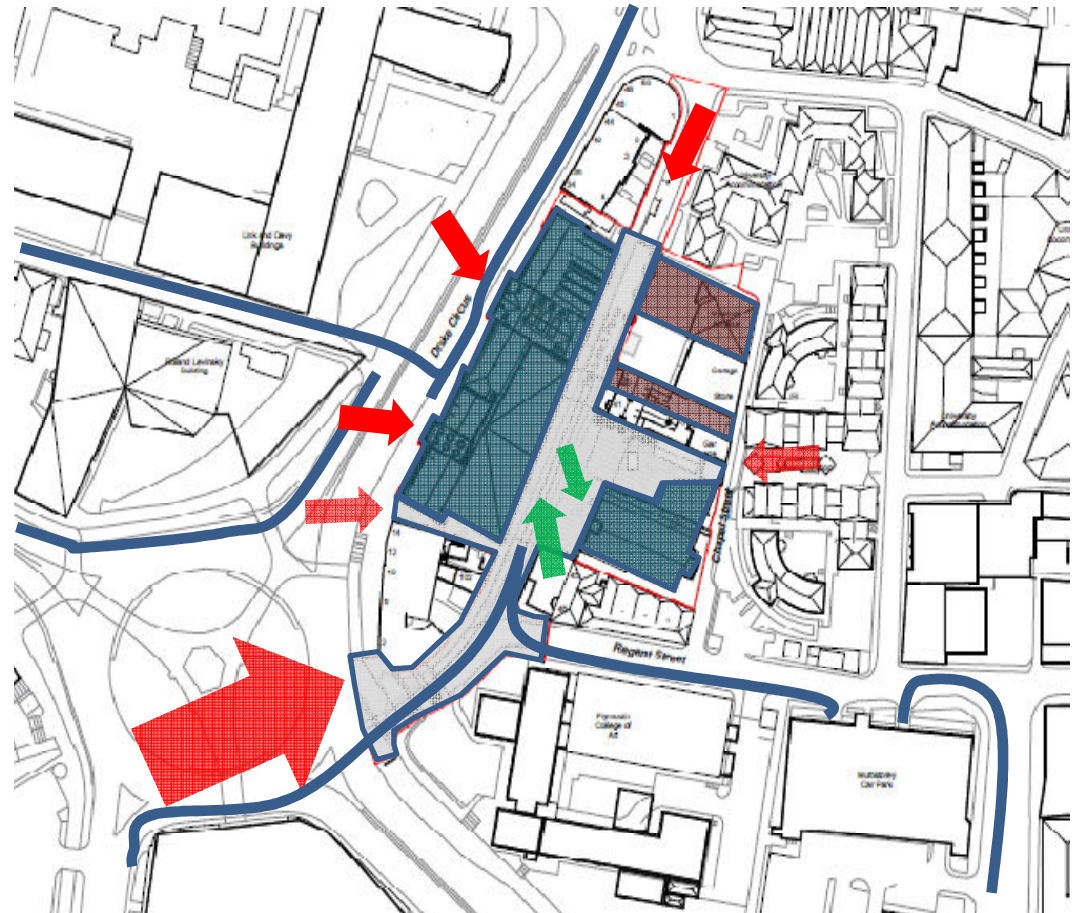
**LOVE OUR PAST**  
**STEP INTO**  
**THE FUTURE**



# ARRIVAL

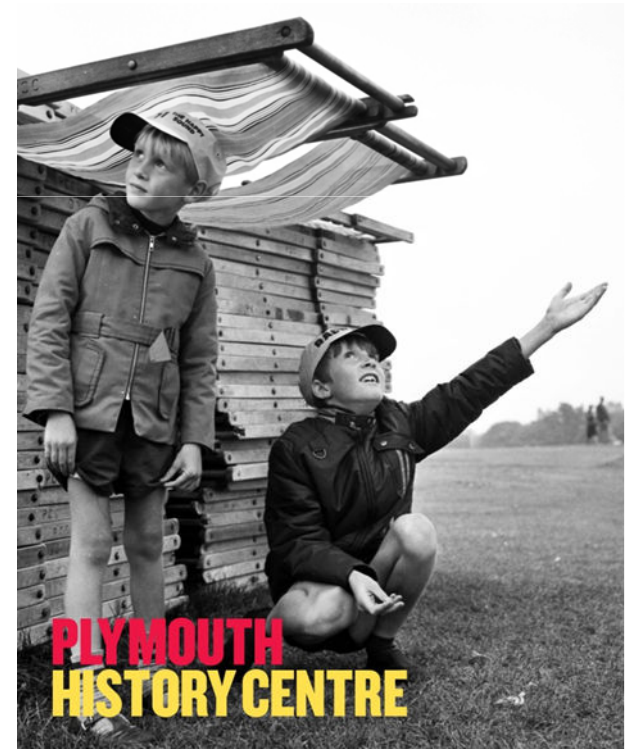
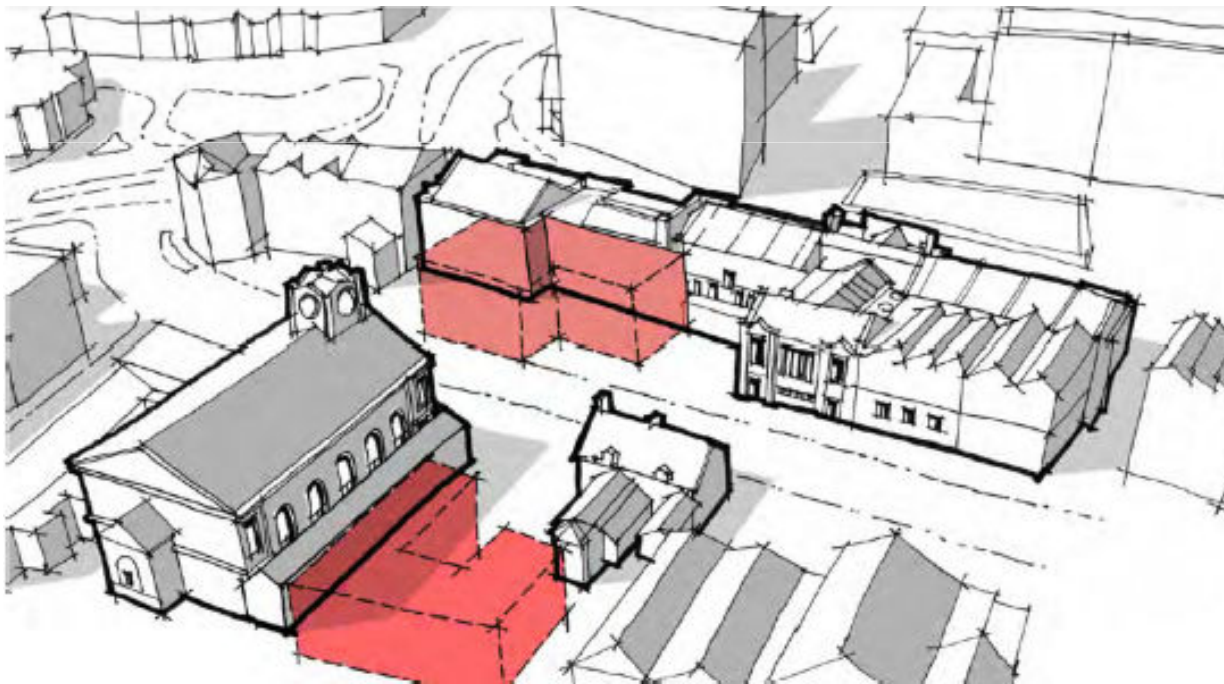
**LOVE OUR PAST  
STEP INTO  
THE FUTURE**

- Existing Museum & Library entrances off North Hill are retained
- Routes and way finding from transport nodes
- New visitor flow is encouraged along Tavistock Place to the new front door in the new extension
- The urban experience is made more permeable with new pedestrian routes from the East and by the South end of the Library



# CREATING THE SITE

**LOVE OUR PAST**  
**STEP INTO**  
**THE FUTURE**



# THE PLACE

External Space – a visitor experience

**LOVE OUR PAST**  
**STEP INTO**  
**THE FUTURE**

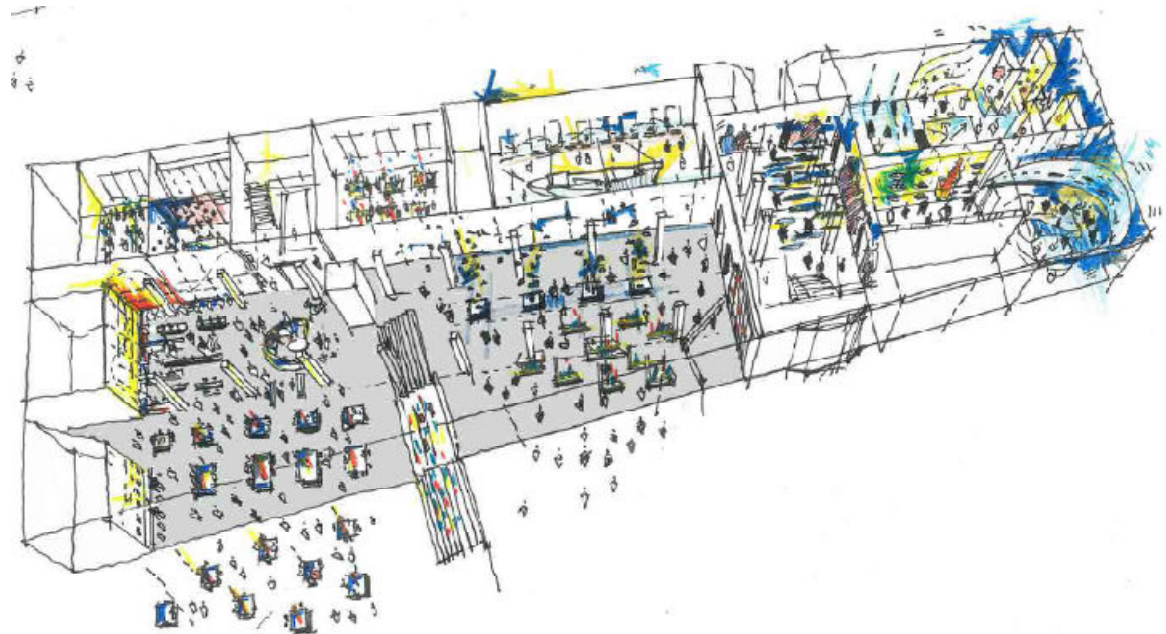
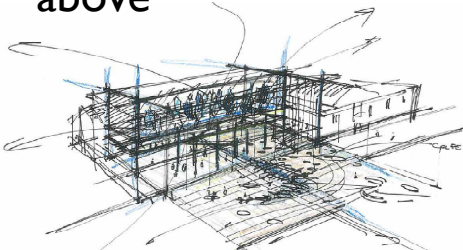


# CREATING THE DRAMA

New extension – a visitor experience

**LOVE OUR PAST**  
**STEP INTO**  
**THE FUTURE**

- Input from Event - simplify and amplify the concept
- Opening up the building to the East elevation – an open invitation – joining outside to inside
- First impressions of a dramatic exhibition area / shop window / giant display case
- Viewing the box of activity when above



# MASTERPLAN REVIEW

## Process and Work Undertaken



End of April 2015 – Event Communications tender accepted

- May to July - first stage master plan review including:
- The building and public realm
- Audiences
- Interpretation, Content and Collections
- Vision & Visitor Proposition

# EXHIBITION – BIG PICTURE

Emerging ideas

**LOVE OUR PAST**  
**STEP INTO**  
**THE FUTURE**

G

The Wider World Walk in the foot steps of Drake Darwin and Scott....

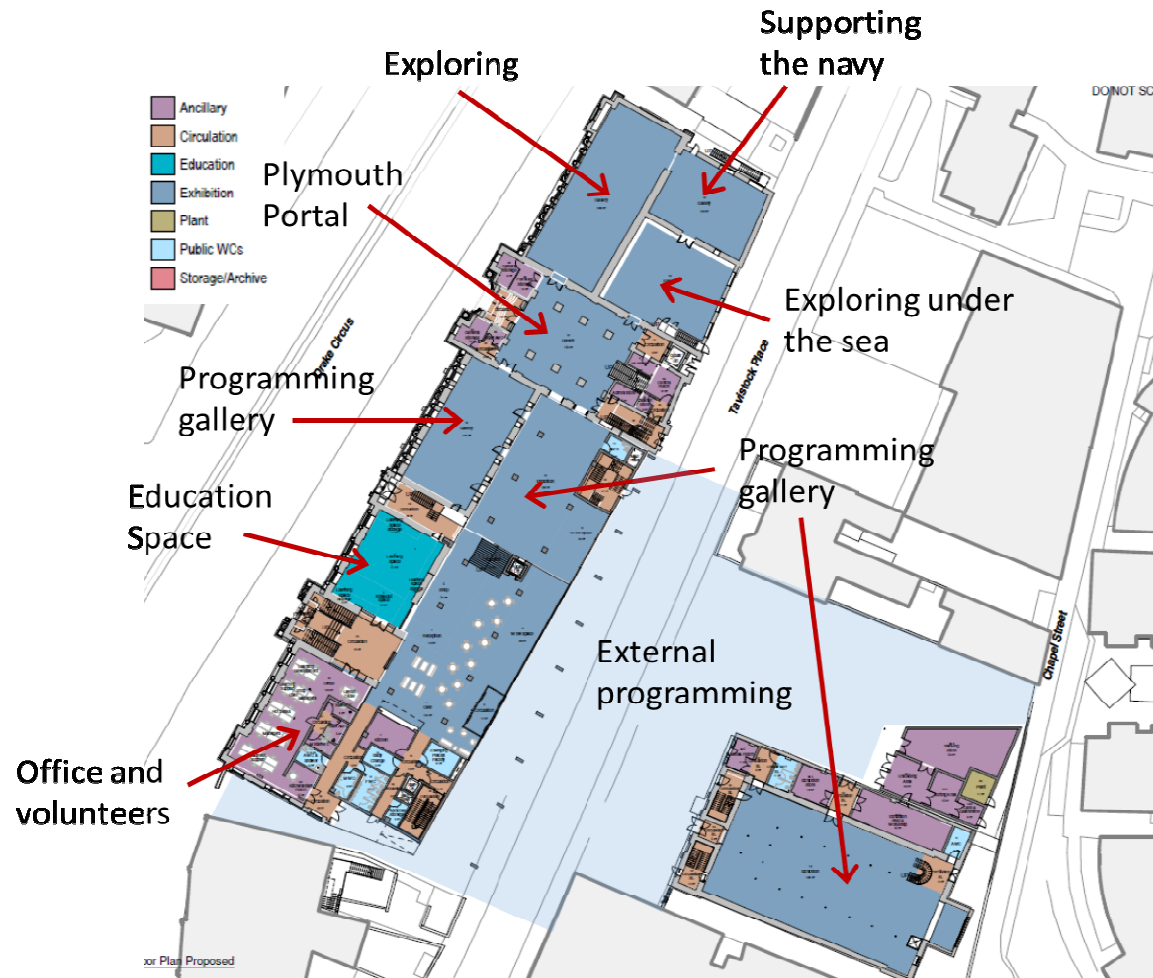
F

Plymouth/Region Making, Creating, Investigating , Living & connecting...

# GROUND FLOOR PLAN

**LOVE OUR PAST  
STEP INTO  
THE FUTURE**

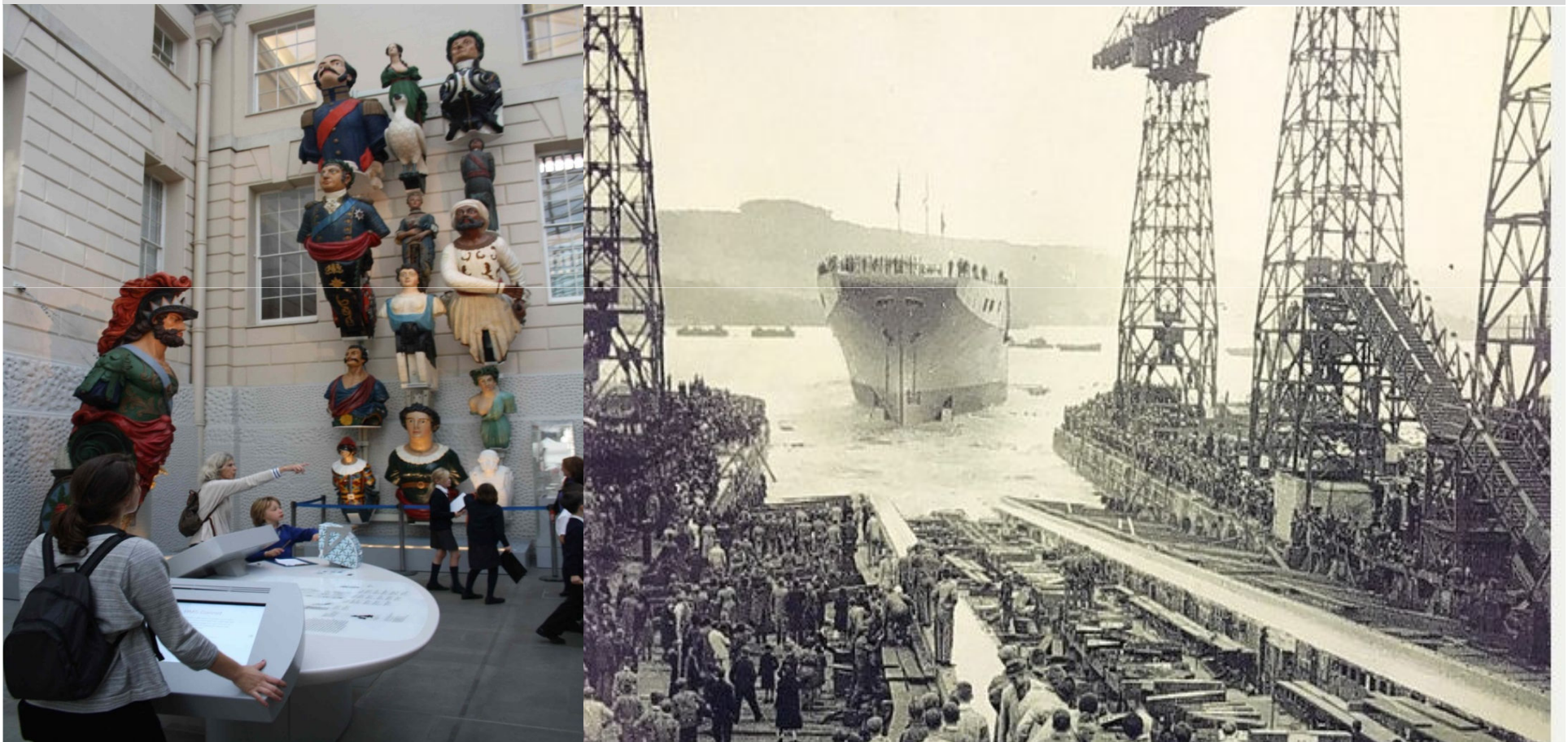
- People enter into a free-flowing Ground Floor, light, airy and easy to navigate
- New extension and existing galleries work as whole
- An open-plan new extension has a dramatic entrance space exhibition which draws people in to more detailed and intimate interpretation
- A new café spills out onto Tavistock Place
- Existing 1910 and 1950s stairways are retained.
- Museum Galleries are refurbished
- St Luke's is a new exhibition space with support accommodation to the North



# SUPPORTING THE NAVY

Emerging ideas and indicative examples

**LOVE OUR PAST**  
**STEP INTO**  
**THE FUTURE**



# EXPLORING UNDER THE SEA

Emerging ideas and indicative examples

**LOVE OUR PAST**  
**STEP INTO**  
**THE FUTURE**



# EXHIBITION – BIG PICTURE

Emerging ideas

**LOVE OUR PAST**  
**STEP INTO**  
**THE FUTURE**

G

The Wider World Walk in the foot steps of Drake Darwin and Scott....

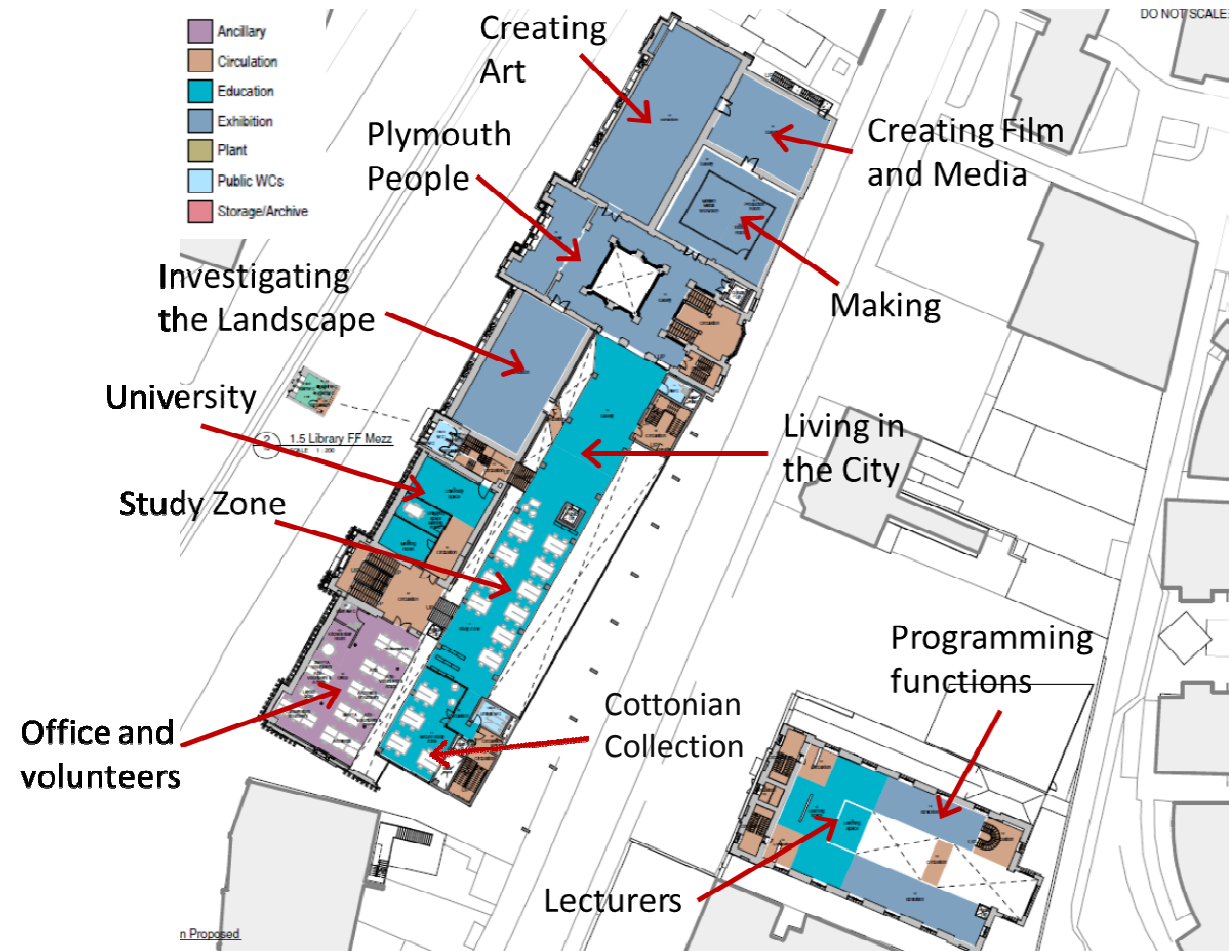
F

Plymouth/Region Making, Creating, Investigating , Living & connecting...

# FIRST FLOOR PLAN

**LOVE OUR PAST**  
**STEP INTO**  
**THE FUTURE**

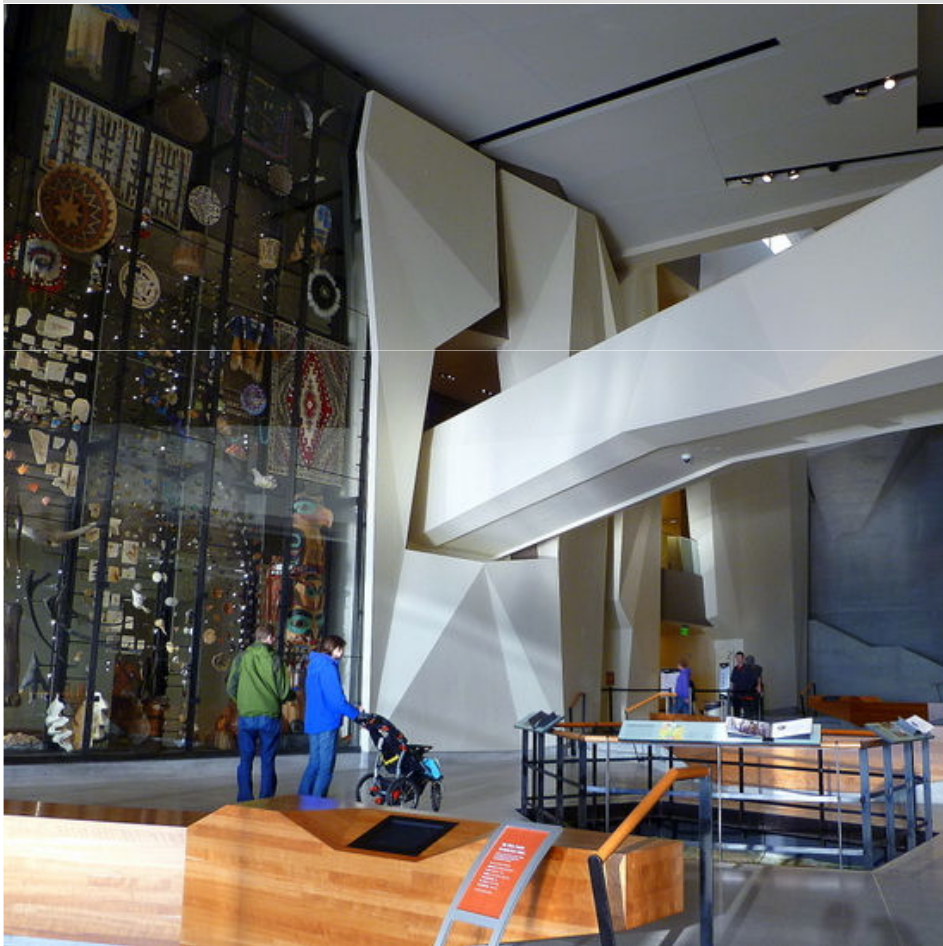
- The extension provides a new Study Zone which overlooks the entrance space and looks out to St Luke's
- The Study Zone takes an innovative approach, blending an exhibition experience with opportunities for more focussed investigation
- Museum galleries are refurbished
- Library is converted into Study and staff office spaces
- St Luke's mezzanine is for exhibition and Learning



# INVESTIGATING THE LANDSCAPE

Emerging ideas and indicative examples

**LOVE OUR PAST**  
**STEP INTO**  
**THE FUTURE**



# LIVING IN THE CITY/PLYMOUTH PEOPLE

## Emerging Ideas

**LOVE OUR PAST  
STEP INTO  
THE FUTURE**

Introduction to:

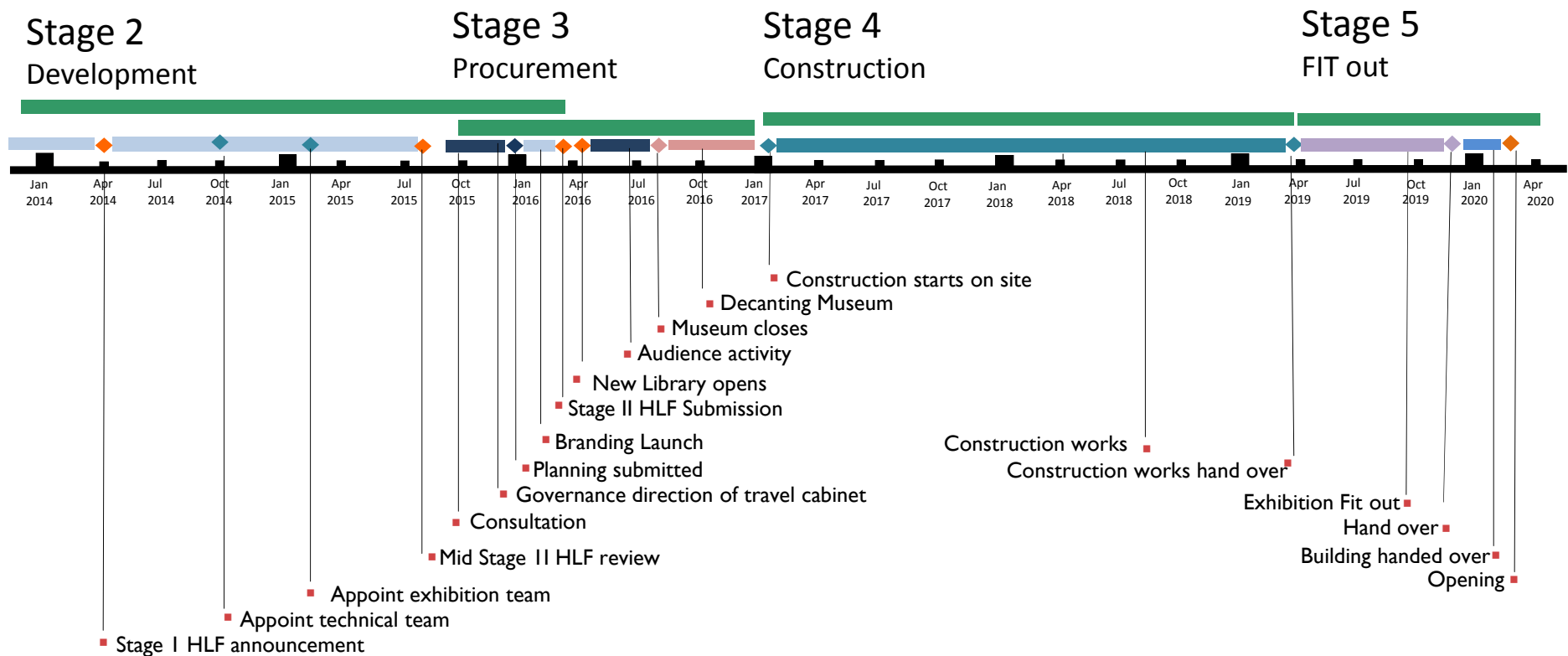
Louisa Blight – Collections Manager

Anne Morgan & Debbie Watson - Content Team Leads



# STAGES 3-5: THE PROGRAMME

**LOVE OUR PAST  
STEP INTO  
THE FUTURE**



# PLYMOUTH HISTORY CENTRE

**LOVE OUR PAST**  
**STEP INTO**  
**THE FUTURE**

David Draffan

SRO

Paul Brookes

Programme Director

Nicola Moyle

Client Lead

Gareth Simmons

Programme Manager

**This page is intentionally left blank**